



Neural Networks and Rules-based Systems used to find Rational and Scientific Correlations between being Here and Now with Afterlife Conditions

Article Record

Prof. PhD Eng. Francesco Pia^{OR*}

PhD Eng.

*Corresponding Author



RECEIVED

2025-12-31

ACCEPTED

2026-01-13

PUBLISHED

2026-02-17

PEER REVIEW

Double Blind

Abstract

What you will read in the next pages is truly an anthology-worthy element, in the sense that it is to be taken seriously; in fact, the place that we will try to describe in this work, in the sense of arriving in an unknown place, which therefore will not be easy to describe. In the path that takes us from non-existence to being and becoming... placed in this location, it becomes interesting that different things or people coexist that have not yet been presented in the era in which we connect and go to browse. A very important aspect is the determination of the window in which one says he had a dream where he saw a car that does not yet exist today but perhaps will exist in the future, or a deceased person or one who will exist in the future; So, once the time window is set, which isn't easy, and determining it is an important aspect in which brainwaves will then be selected. This selection is easy and precise when you're awake and thinking about something and the time window is very clear, so a small interaction with the person is enough. It's a different story when you're dreaming. Shannon's theorem, used in electrical engineering and telecommunications, helps select and "correlate" signals. Why this theorem was invented, crucial for effectively sampling signals and being able to fully reconstruct them, is one of those mysteries that leads us to ask ourselves at lunch with the family: Do I have a colleague? We must therefore perfect the start and stop of recording during the dream by focusing on where we are interested, useful for discovering what we think and that our brain suggests things that we thought were lost in our historical culture and instead suddenly... what we need emerges. We would therefore try to obtain feedback from Afterlife in order to reproduce the brain waves seen in the dream phase thanks to a helmet connected to proactive and not just generative Artificial Intelligence.

Alien

Spaceship

Domus De Janal

AI USE STATEMENT

No generative AI was used for analysis or results.

FUNDING

No external funding was declared for this work.

CONFLICT OF INTEREST

The authors declare no conflict of interest.

DATA AVAILABILITY

Not applicable for this article.

ETHICS

No ethics committee approval was required for this article type.

CONSENT

Not applicable for this article.

TRIAL REG.

Not applicable.

Crossref DOI: 10.34257/GJCSTDVOL26IS1PG1

How to Cite: Pia (2026). Neural Networks and Rules-based Systems used to find Rational and Scientific Correlations between being Here and Now with Afterlife Conditions. Global Journal of Computer Science and Technology, 26(1), 33-36. DOI: 10.34257/GJCSTDVOL26IS1PG1

LICENSE

© 2026 Global Journals. Open-access article under CC BY-NC-ND 4.0 International License.



Print ISSN 0975-4350



Online ISSN 0975-4172




Under the strict compliance and defined process of



METADATA CONTINUATION

AUTHOR CONTACT QR LEDGER

Prof. PhD Eng. Francesco
Piaò*



ARCHIVAL RECORD

GJCST · Vol 26 · Issue 1 · 2026
Article ID GJCST-155984 · DOI 10.34257/GJCSTDVOL26IS1PG1
Print ISSN 0975-4350 · Online ISSN 0975-4172

Neural Networks and Rules-based Systems used to find Rational and Scientific Correlations between being Here and Now with Afterlife Conditions

Prof. PhD Eng. Francesco Pia^{§*}

§ PhD Eng.

Abstract

What you will read in the next pages is truly an anthology-worthy element, in the sense that it is to be taken seriously; in fact, the place that we will try to describe in this work, in the sense of arriving in an unknown place, which therefore will not be easy to describe. In the path that takes us from non-existence to being and becoming... placed in this location, it becomes interesting that different things or people coexist that have not yet been presented in the era in which we connect and go to browse. A very important aspect is the determination of the window in which one says he had a dream where he saw a car that does not yet exist today but perhaps will exist in the future, or a deceased person or one who will exist in the future; So, once the time window is set, which isn't easy, and determining it is an important aspect in which brainwaves will then be selected. This selection is easy and precise when you're awake and thinking about something and the time window is very clear, so a small interaction with the person is enough. It's a different story when you're dreaming. Shannon's theorem, used in electrical engineering and telecommunications, helps select and "correlate" signals. Why this theorem was invented, crucial for effectively sampling signals and being able to fully reconstruct them, is one of those mysteries that leads us to ask ourselves at lunch with the family: Do I have a colleague? We must therefore perfect the start and stop of recording during the dream by focusing on where we are interested, useful for discovering what we think and that our brain suggests things that we thought were lost in our historical culture and instead suddenly... what we need emerges. We would therefore try to obtain feedback from Afterlife in order to reproduce the brain waves seen in the dream phase thanks to a helmet connected to proactive and not just generative Artificial Intelligence.

Keywords: *Alien, Spaceship, Domus De Janal*

* Corresponding Author
Prof. PhD Eng. Francesco Pia

DOI
10.34257/GJCSTDVOL26IS1PG1

1. Introduction

In the flow of events from the origin to today up to the place where everyone, and everything, would go as in the problem of the two twins: no one has ever returned from where they came out and the two discuss what the "world" outside them known could be like. We have to think about the second-order state of consciousness (conscious of being so) and then we have a higher, global consciousness of the path and therefore the choice that we (with our free will) operate; our presence here and now is the constituent of a complex, harmonized design, shaped by the Creator.

So, time doesn't exist, but position does, and therefore... everyone (and everything) would end up in the same position. The idea would be to study and engineer a system that can be tuned to a helmet that reproduces the brainwaves learned during the training of the intelligent system. With this system, we're trying to select EEG spots from people who see the dead in their dreams or think of them as being dead: those who are in the afterlife or have not yet appeared. So we need to select these brain waves, and since a wave can be the result of many waves, that is, we're talking about a tuner. Upon reentry, the signals are composed of certain electromagnetic waves that, when transmitted into the helmet, will allow us to reproduce and see the place of the dead, and perhaps interact as if the dream

were being relived. Second-order consciousness places paramount importance on the individual; many, becoming aware of a fact, would feel uncomfortable about infringing on others because we'd all end up in the same place anyway. Who's to say the guy you wronged can't retaliate and have the capacity to do so?

2. Methods and Tools

In the journey, or flow of existence, the passing completes the person who is aware of it, a consciousness on the journey, so we can call it: third-order consciousness; this will be highlighted by the feedback of signals produced by a computer system and transmitted to the helmet and then to the brain, so that it can relive more fully, close to the (experiential) window of the signal correlated with the one it itself generated.

A first investigation method would be to select some people with strong dreaming abilities and who can be defined as "lucid dreamers", monitor them with an electroencephalogram and measure their brain waves for 24 hours and then verify, if applicable, whether they have had dreams or thoughts related to the deceased or the afterlife and record the signals in the selected time window; once this is done, neural networks are used, even if they are time series, to see if when we think while awake, ordinary people have the same waveforms.

However, it must be said that the intelligent system trained to recognize EEG waves will also include those while awake; because one can imagine, or think, of a parent, for example, or of a deceased loved one (it's premature to think of who will come next)... Napoleon, Julius Caesar, for example: in that moment one thinks about it intensely: what or what waves does the brain manifest? Certain particular characteristics can be found, the one just described is a first method.

We would like to connect to the possible location called Afterlife with a feedback that goes back to the here and now by connecting the helmet that will give its own signals that can be selected for the event considered by the user.

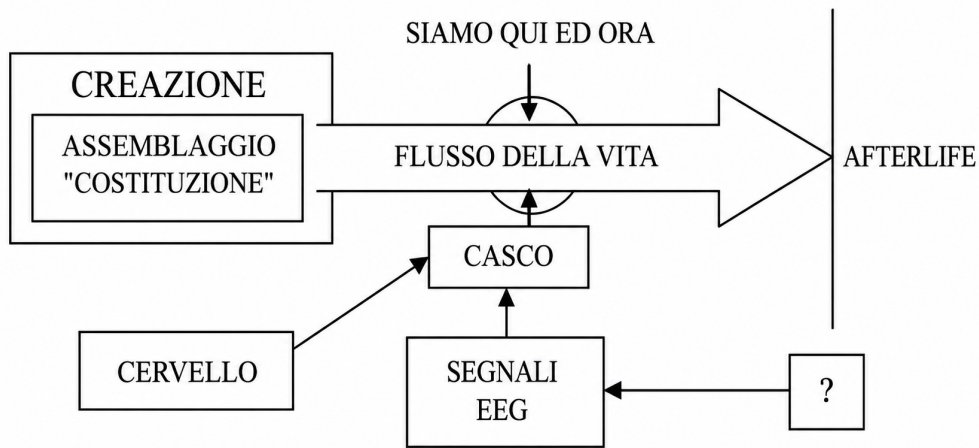


Figure 1. This figure represents the timeline from the origin, birth, the path of "life", where we are here and now, until death and the eventual transfer of the spirit to the Afterlife..

Another very important aspect is represented in the following figure Fig. [4] present in the parallel universes in [11], being there the path that reproduced gratifying the idea that it exists, let's say teleportation [7]; but it is also important instead the existence of an indefinite limit of all situations or possible choices: everything

flows into a circle that surrounds everything as a limit of all things and all paths, therefore this circle represents the window towards the environment that we call Afterlife, otherwise it is necessary to delve deeper or/and change hypothesis.

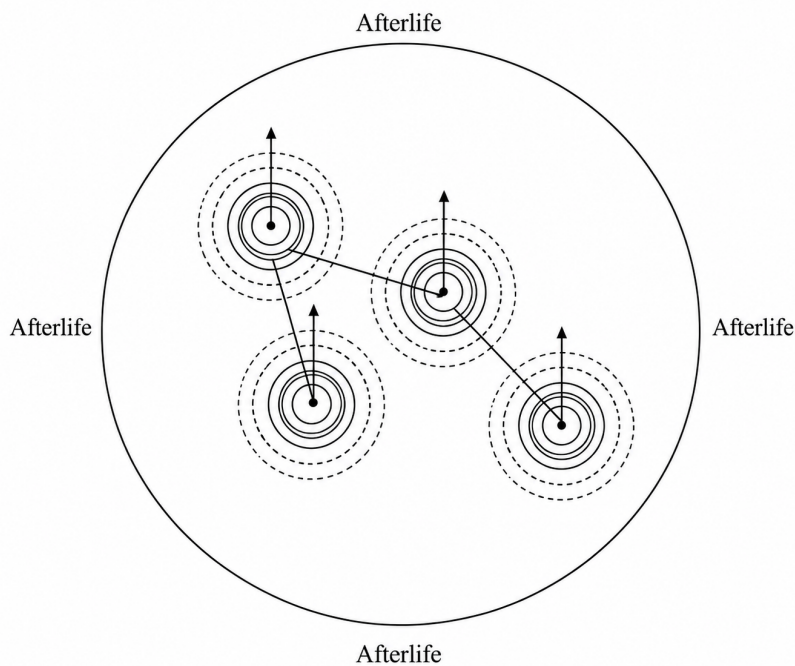


Figure 2. In this figure it is represented more than one line of events that arise from "point" configurations of any circumferences and circle conjunction

The paradigm we want to use is always the same: a very weak hypothesis that allows us to be more imaginative. The weak hypothesis is that we can tune audio-video to the place where all the dead are (perhaps even those yet to be born or become) in the becoming (flow) of life from the beginning to the end and the presence: I am here, I was... no one knows where, but it is a place where everyone is dead, or has yet to be born, time not existing; the condition is persistence in an environment where everyone

is present, and therefore like, for example, a golf ball that from the beginning—the construction of the materials, the assembly, the formation of the ball, the positioning, the swing with the club, the arrival at the hole—is taken from there, then, since time does not exist, it will be destroyed like everything else; nothing persists and nothing continues to be assembled.

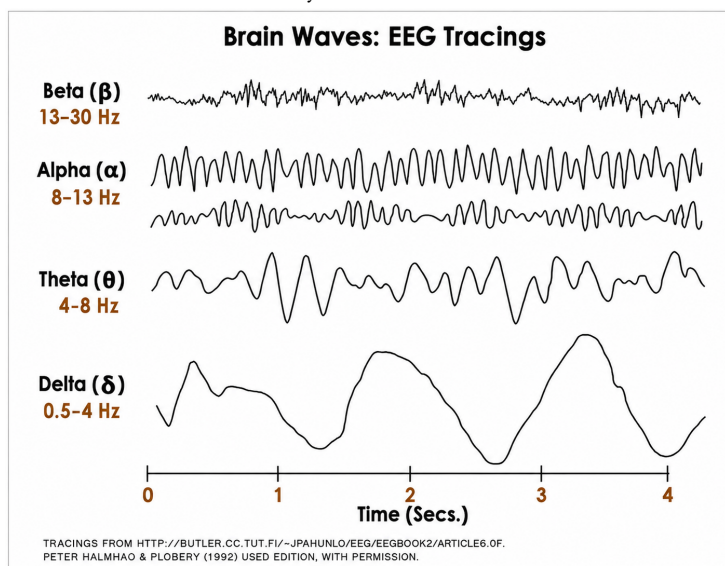


Figure 3. This figure shows the characteristic curves of an EEG.

The system, with the helmet and the transmitted signals, and with good correlation (in this work, correlation means the ability to narrow the window within which the brainwaves are then selected), can record all brain activity, creating slots, especially when the individual customizes the use of the helmet, for example during an inspection, and would like to relive that situation at a later time; this system should help. Indeed, by reproducing the recorded waves completely this time (thanks to Shannon's theorem and complete correlation), and therefore also the time windows are well-defined, the experience is reproduced, so it can be helpful when thinking about a specific or nuanced situation; this fact needs to be verified with experiments.

This would be a significant innovation in the field of on-site inspections of human activities—industrial, civil, medical, scientific, military, and psychophysical. The applications are countless, and this must be taken into account when launching a startup (a pilot project to engineer the ideas described here). Using generative AI, the system's response, or its correlation within the time window, could be improved by placing flags (that draw attention, such as a milestone, an object, a situation). These flags, during training, likely make them more perceptible, improving the brain's compliance with the system. The brain then responds better by facilitating brainwaves to relive the recorded situation and correlate it with the recorded "slot" trained to memorize and highlight certain aspects.

3. An Example

An example speaks louder than a thousand words. Luckily, we had a dream a few nights ago, and we'll tell you about it. A few days ago, we saw a TV program about the Domus De Jana, ancient Nuragic-sized structures found in great numbers only in Sardinia.

The dream in question is classified as level one, very bright, lasting about fifteen minutes and ending at a verifiable time. Nuragic

structures are presumably difficult for humans to construct; While I was having lunch with hunter friends, and it was a lovely time, with roast meat, red wine, and smiles, in the woods on one side of a promontory, on the opposite side I saw a spaceship crash and explode on the opposite side from where I was. I couldn't dial the fire department. The flames were high, devices like tablets and cell phones weren't working. At that point, I asked a doctor friend to leave me her cell phone, and it also had a special system for entering numbers, but she managed to call the emergency number and the switchboard answered, which put me through to the fire department. That's how it works in real life. While the fire department was being passed on to me, I approached to help the alien, and what could I see? First of all, a huge excavation at least ten meters deep, and other friends from my town who had nothing to do with it, with their lunch, and those who were having lunch weren't worried about anything. A huge excavation that two bulldozers couldn't complete in three days. Inside, neatly arranged, were pieces of the spaceship and a mix of technology and feudalism, a lot of technology; neatly arranged, to be buried later: the conclusion is that the dream, presumably, the Domus de Jana have an alien connotation. This is, however, a dream, emphasizing that the Domus de Jana, and the aliens in fact, may not exist in reality. It's also true that the project manager was a friend of mine, with a poor academic record but industrious in construction (he renovated his house... and what a job). Where did the alien go?

4. Conclusion

In our life journey, we are, those who are, natural lucid dreamers up to the fourth level, very clear, premonitory, we find lost objects: these things happen. However, writing this work would have been "impossible" if we had chosen differently along our life journey: a yes to a job offer where we said no, a different girlfriend, a yes to a different financial situation, etc.; something different from the

path we experienced would have been generated. We attach great importance to this work, in the sense that we should be more aware of the physiology that has formed. Therefore, with the third-order state of consciousness, we have a very important concept that should give us pause. Let's assume, hypothetically, that everything is working correctly; therefore, a person who reviews their dreamed or lived experiences works: loved ones, objects, people they have never met because they were not yet born or previously died; Let's assume this happens and the person becomes less subservient and eager to stay connected, at this point we face a question: is it truly an Afterlife or is it simply a bluff, an unknown quantity? This isn't easy to know yet. In the existence of a possible Creator, which we believe exists, everything makes sense if we arrive somewhere—the famous Afterlife—to flow into a "happy" island... a destination point, and thinking about the beyond is not the case, for now.

A positive aspect, we believe it almost always is, is the lifestyle changes that can develop from a consciousness of the path (of the third order). After all, we would probably end up in the same place, not in the flesh but in spirit, all there; perhaps it's time to behave more lovingly?

After all, he who sows the wind (love/hate) reaps the whirlwind (love/hate) even in the afterlife?

■ ACKNOWLEDGEMENTS

An extraordinary thank you to all those who take care of people with physical and mental disabilities.

■ REFERENCES

- [1] Francesco Pia, "I will be back", pp. 149, Ed. Amazon © Kdp, January 2019.
- [2] Francesco Pia, "The liar knee", pp. 224, Ed. Amazon © Kdp, July 2019.
- [3] Francesco Pia, "Genetic geometry", pp. 80, Ed. Amazon © Kdp, January 2019.
- [4] Francesco Pia, "JEWEL: a cosmological model due to the geometrical displacement of galactic object like black, white and worm holes", ICCEA 2021: 15. International Conference on Cosmology and Extragalactic Astronomy; July 19-20, 2021 in Toronto, Canada.
- [5] Francesco Pia, "How to Try to Get Antigravity from Electrical Circuits by an Almost Magnetic Monopole or from Anti Matter" in *IRJAES*, Volume 7, Issue 3, Date:25/06/2022.
- [6] Francesco Pia, "A Computer System based on Neural Network and Rules System based for find An Optimum Mix of Vaccine and/or Drugs for mRNA Like Covid-19 Virus and other Pathologies" in *IRJAES*, Volume 7, Issue 2, Date, 09/06/2022.
- [7] Francesco Pia, "Polifemo: a Teleportation Model based on Object Like Black, White and Worm Hole for Electric Signal and Object Also thinking and with Conscience", *IDIRJAES-V7N3P66Y22* June-Au 2022 Issue Vol. 7 Issue 3 <https://irjaes.com/volume-7-issue-3/>.
- [8] Francesco Pia, "A Symmetry of Cosmological Model Named Jewel that Allows Reentry into the Starting Parallel Universe with Adequate Teleportation based on Creation of useful Stellar Object Like Black, White Holes", ICES-23-P1159, ICES2023, 6-8 February 2023, Riyadh, Saudi Arabia.
- [9] Francesco Pia, "Neutron "Star", a Hypothetical Small Neutron "Star" based on the Emission of Neutrons in Minerals such as Granite and Other Commonly Available Objects", *Global Journal of Researches in Engineering: E*, Publisher: Global Journals, Civil and Structural Engineering, Volume 23, Issue 1, Version 1.0, Year 2023, Type: Double Blind Peer Reviewed International Research Journal, Online ISSN: 2249-4596 & Print ISSN: 0975-5861.
- [10] Francesco Pia, "A Natural Model for Dark Matter and its Interaction with Stellar Objects Such as the Galaxy Known with Name "The Milky Way", *American Journal of Biomedical Science & Research*, 2023, 19(5), Jbsr.Ms.Id.002630, DOI: 10.34297/Ajbsr.2023.19.002630, Received: July 28, 2023; Published: August 07, 2023, Pag. 616-621, Final Pdf: Pp-Rw-23-0513, ISSN: 2642-1747.
- [11] Francesco Pia, "A Time-Machine, an Electro-Mechanical System that Have a Strange Behaviour Respect at Time", *American Journal of Biomedical Science & Research*, 2023, 20(2), Ajbsr.Ms.Id.002681, DOI: 10.34297/Ajbsr.2023.20.002681, Received: September 16, 2023; Published: September 21, 2023, Pag. 122-126, Final Pdf: Pp-Rw-23-0513, ISSN: 2642-1747.
- [12] <http://www.neuroscienzedipendenze.it/eeg.html>